

MELIÁ

COSTA DEL SOL

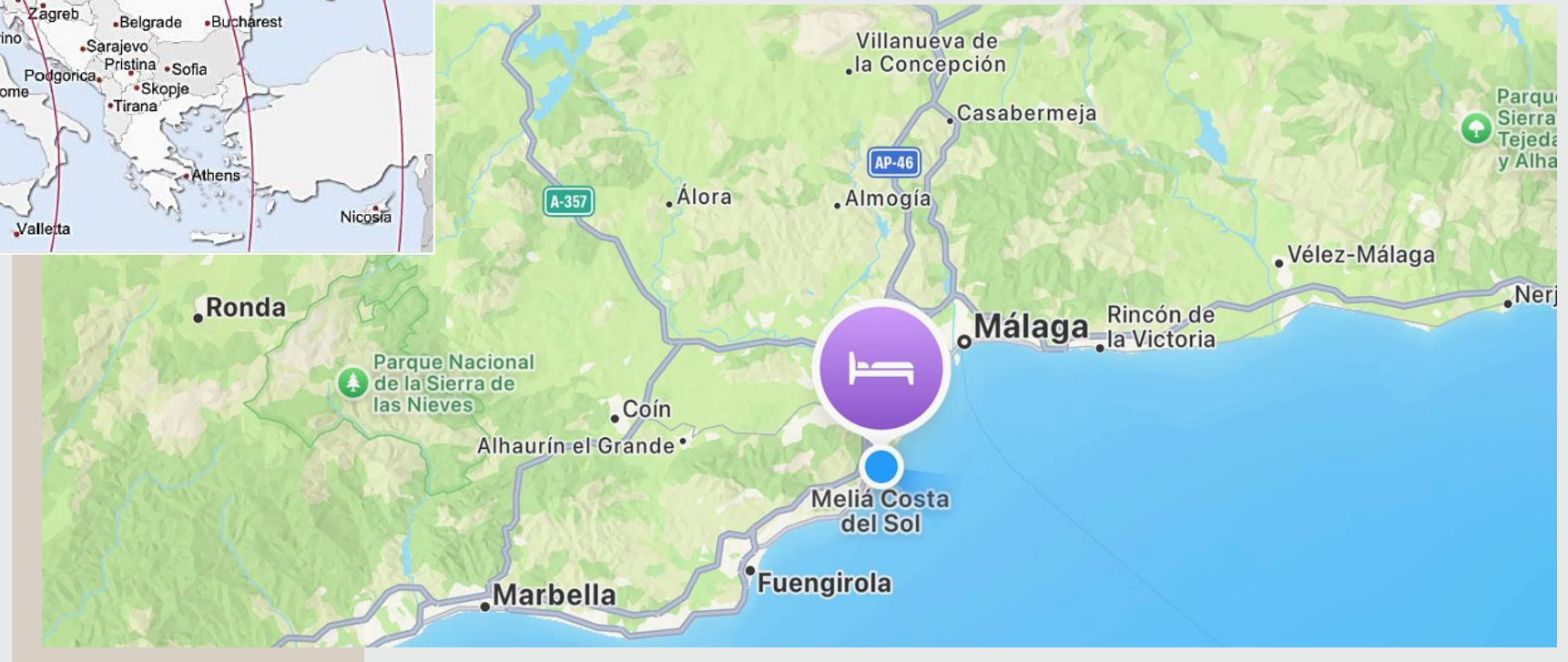
MÁLAGA



Welcome to la Costa del Sol ☼



- 7 km / 10 minutes to Málaga Airport
- 14 km / 20 minutes to AVE Train Station María Zambrano
- 10 km / 15 minutes to Málaga Conference Center
- Well connected to major Spanish and European cities



A balcony with lounge chairs and a glass railing overlooking the ocean. The balcony is furnished with two lounge chairs and two armchairs. A green cushion with the Meliá logo is on one of the lounge chairs. The ocean is visible in the background under a blue sky with some clouds. The balcony floor is made of light-colored tiles.

**540 rooms,
all with sea view**

Meliá Sea View

Deluxe Sea View

Premium Sea View

Executive Junior Suites

Master Suites

The Level Double Room

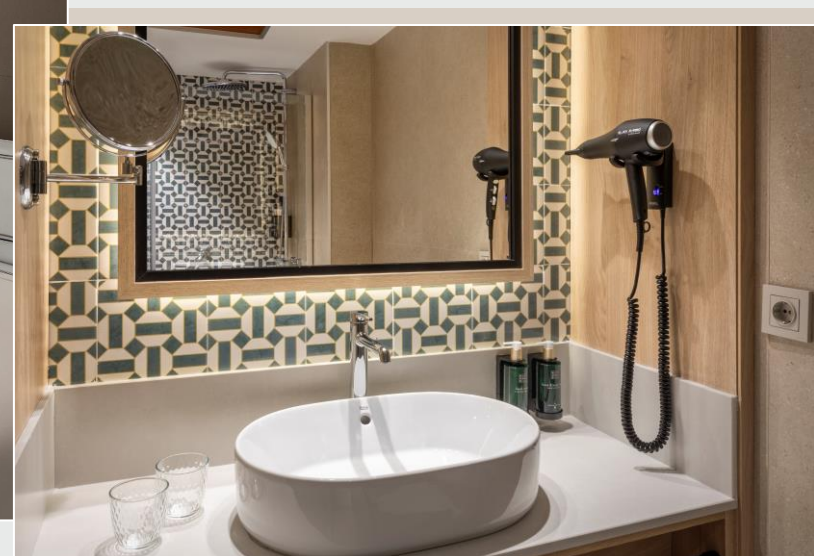
The Level Junior Suites

The Level Master Suites

**ROOMS &
SUITES**

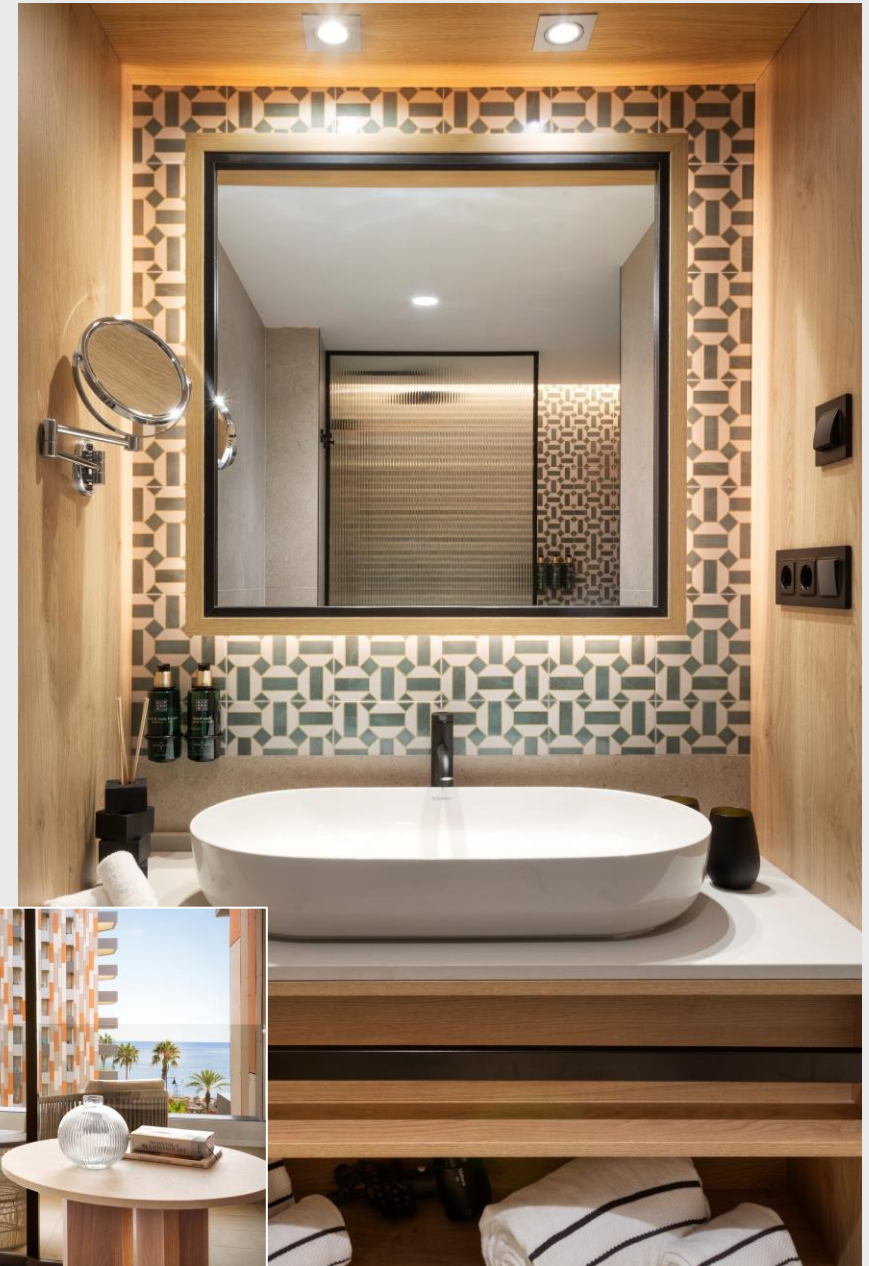
Meliá Sea View

- Room of 28–30 m² plus a 4 m² terrace with sea views.
- Complimentary Wi-Fi and safe.
- Kettle with tea service.
- 43” LED TV in the bedroom with Chromecast technology.
- Located between the 1st and 3rd floors of the hotel.



Deluxe Vista Mar

- Room of 28–30 m² plus a 4 m² terrace with sea views.
- Complimentary Wi-Fi and laptop-size safe.
- Kettle with tea service.
- 55" LED TV in the bedroom with Chromecast technology.
- Located between the 3rd and 9th floors of the hotel.



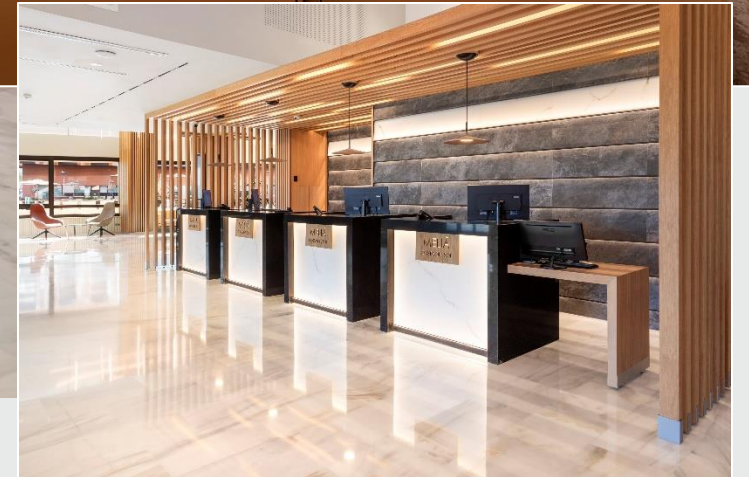


Executive Junior Suites

- 70 m² with front sea view.
- TWIN or King beds plus a sofa bed in the living room.
- Premium Wi-Fi and safe.
- Kettle with tea station and coffee machine included.
- Premium amenities.
- 65" LED TV in the living room and 43" LED TV in the bedroom, both with Chromecast technology.



2 THE HOTEL



Buffet Restaurant



& Central Bar



The Beach Restaurant

Located in front of the hotel, this beach bar–restaurant becomes a lively meeting point showcasing the flavors of Málaga.

The spectacular views of the Mediterranean are an additional ingredient to the experience.



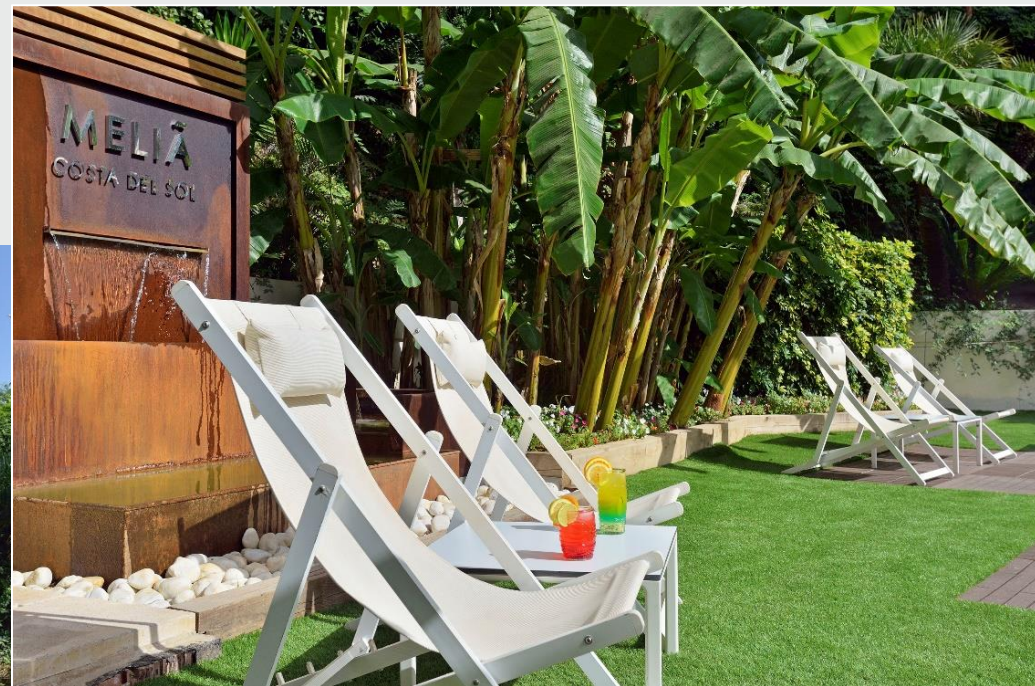
Sky & Sea Rooftop

An exclusive space of over 1,200 m² with spectacular panoramic sea views.
Reserved for adults, featuring a pool, bar–restaurant, and a terrace–solarium

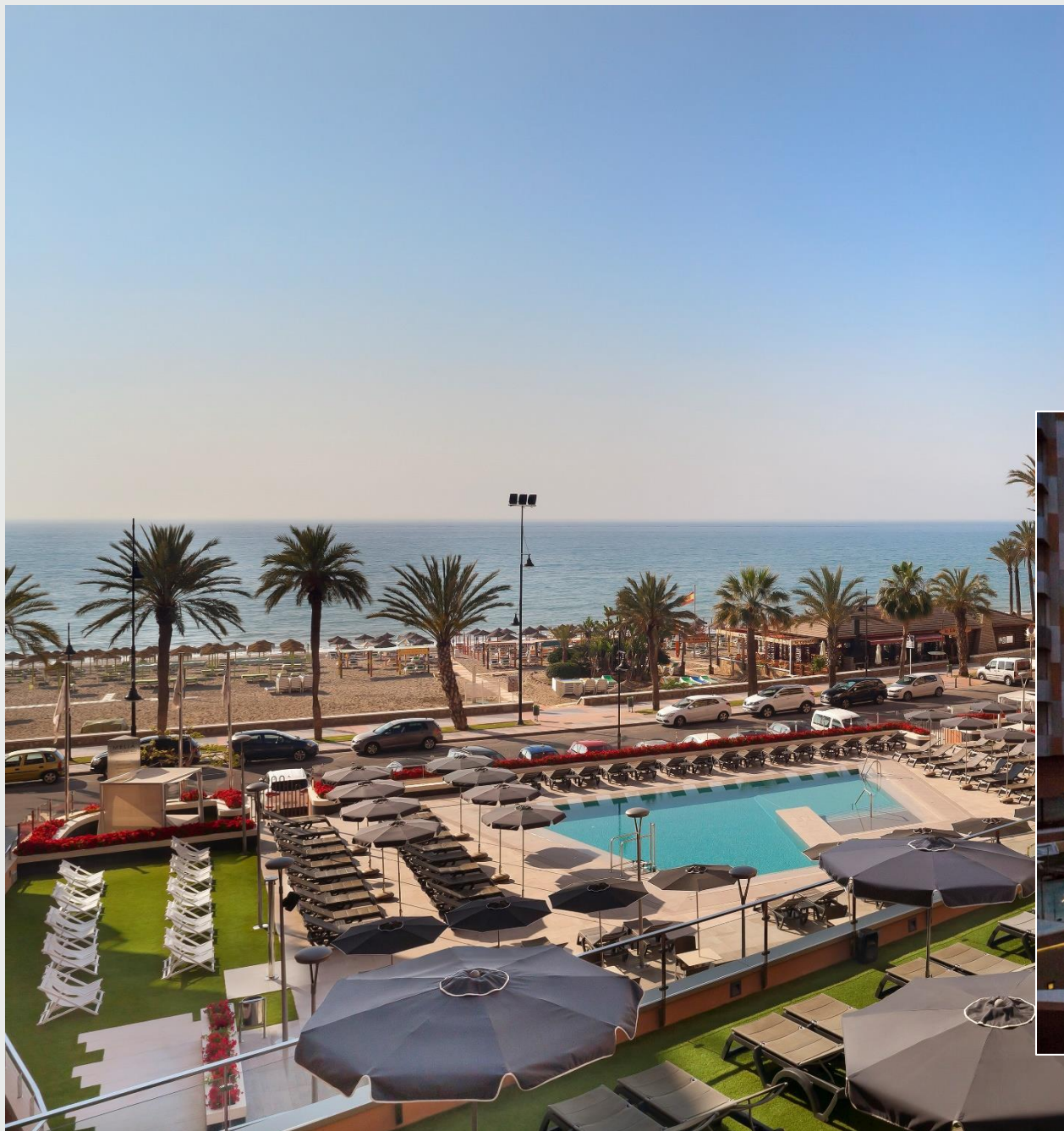


Tropical Garden

Outdoor area next to our central bar, perfect for relaxing...

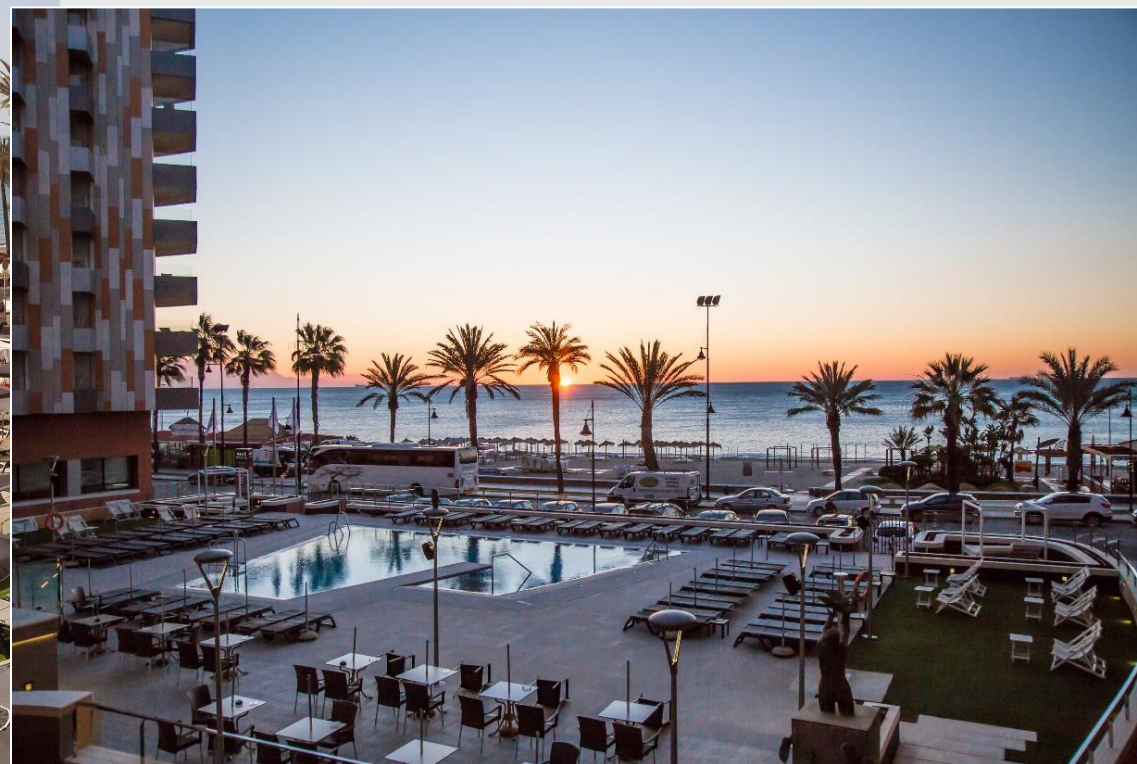


...adjacent to stunning landscaped gardens



Outdoor Pool and Solarium

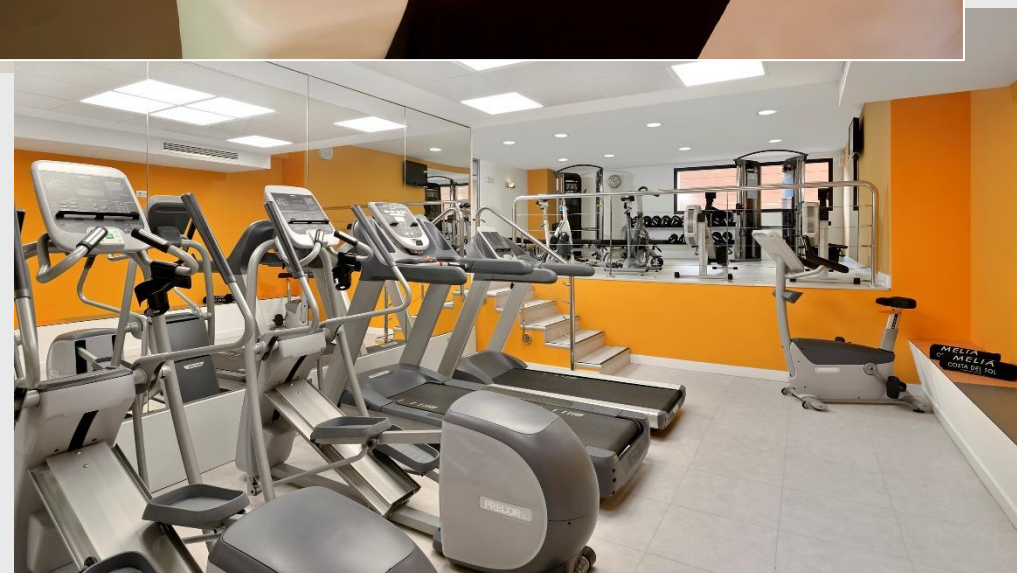
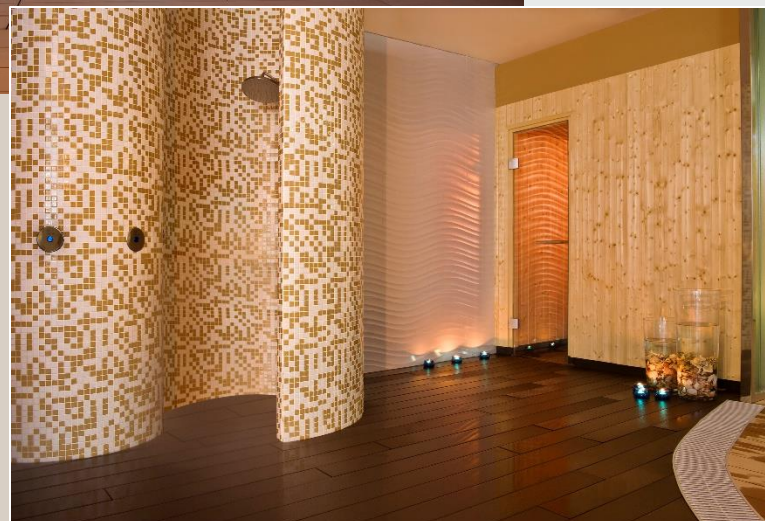
Spectacular pool located between our buildings, offering Mediterranean views along with bar service and a solarium.



Health and Wellness

350 m² Thalasso Spa designed for relaxation, featuring a seawater pool at 37°C, steam bath, sauna, massage cabins, and a relaxation area

Fitness room and activity area available.





3 MICE

Convention Center

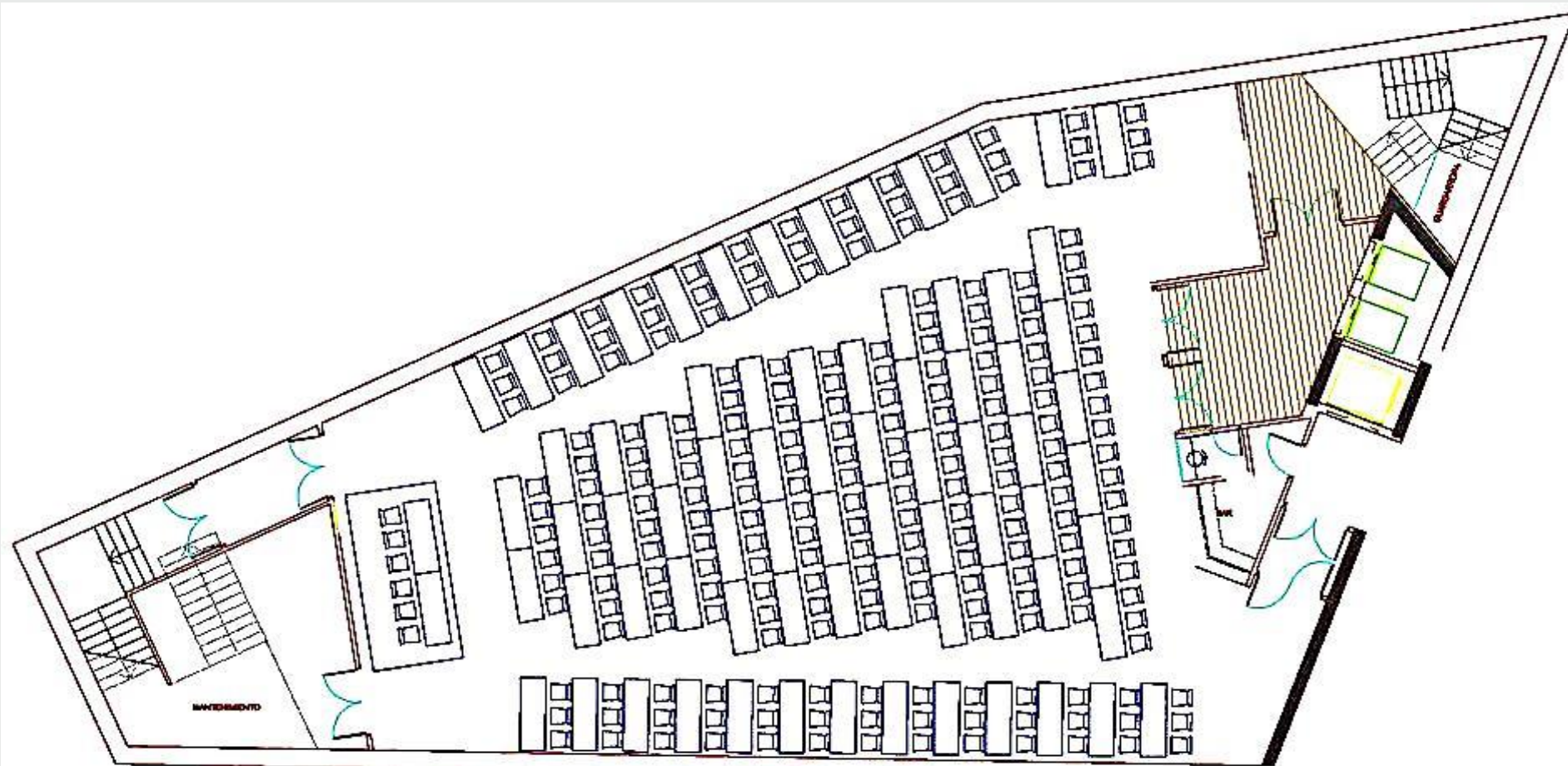
Convention Center with 850 m² spread over three floors, fully equipped, plus 4 additional meeting and exhibition rooms within the hotel (a total of 1,500 m²).

With 16 meeting and banquet rooms (capacity up to 400 people), Meliá Costa del Sol is the ideal venue for hosting any type of event.

Rooms feature natural daylight, and some offer sea views.

Open-plan, multifunctional, and versatile spaces.





CENTRO DE CONVENCIONES HOTEL MELIA COSTA DEL SOL. PLANTA -1. SALÓN MÁLAGA MAGNA, ESCUELA ESPIGA.

MALAGA MEETING ROOM

Surface	Height	Theatre	Classroom	“U” shape
360 m ²	4.24 m	400	200	63

MALAGA MEETING ROOM





TORREMOLINOS MEETING ROOM

Surface	Height	Theatre	Classroom	“U” shape
240 m ²	3.94 m	300	150	45

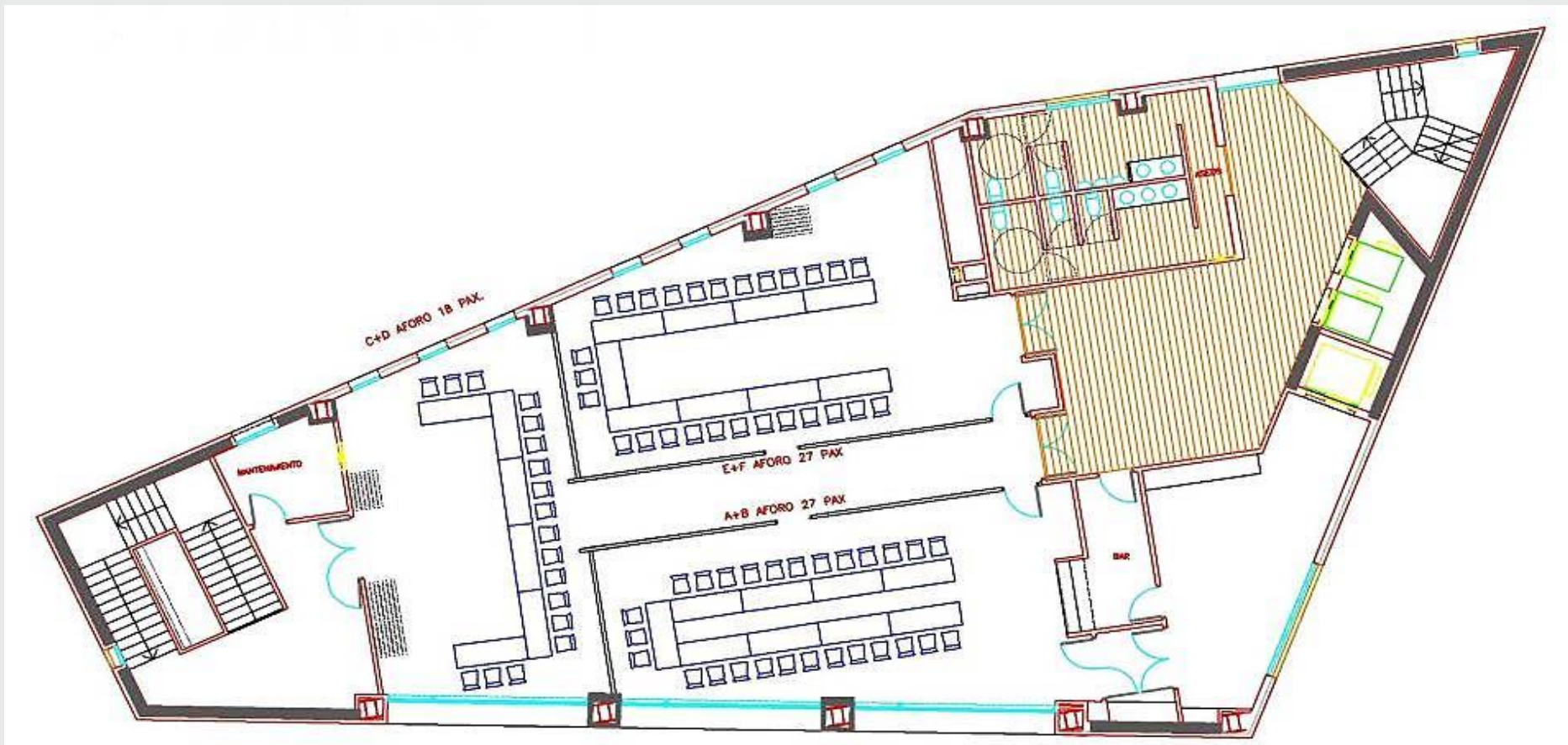
This hall can be divided using a system of mobile, soundproof panels, creating up to 5 breakout rooms.

It is ideal for meetings from 15 to 300 attendees, depending on the room setup and configuration.

An office/secretariat area is also available at the entrance of the hall.

TORREMOLINOS MEETING ROOM





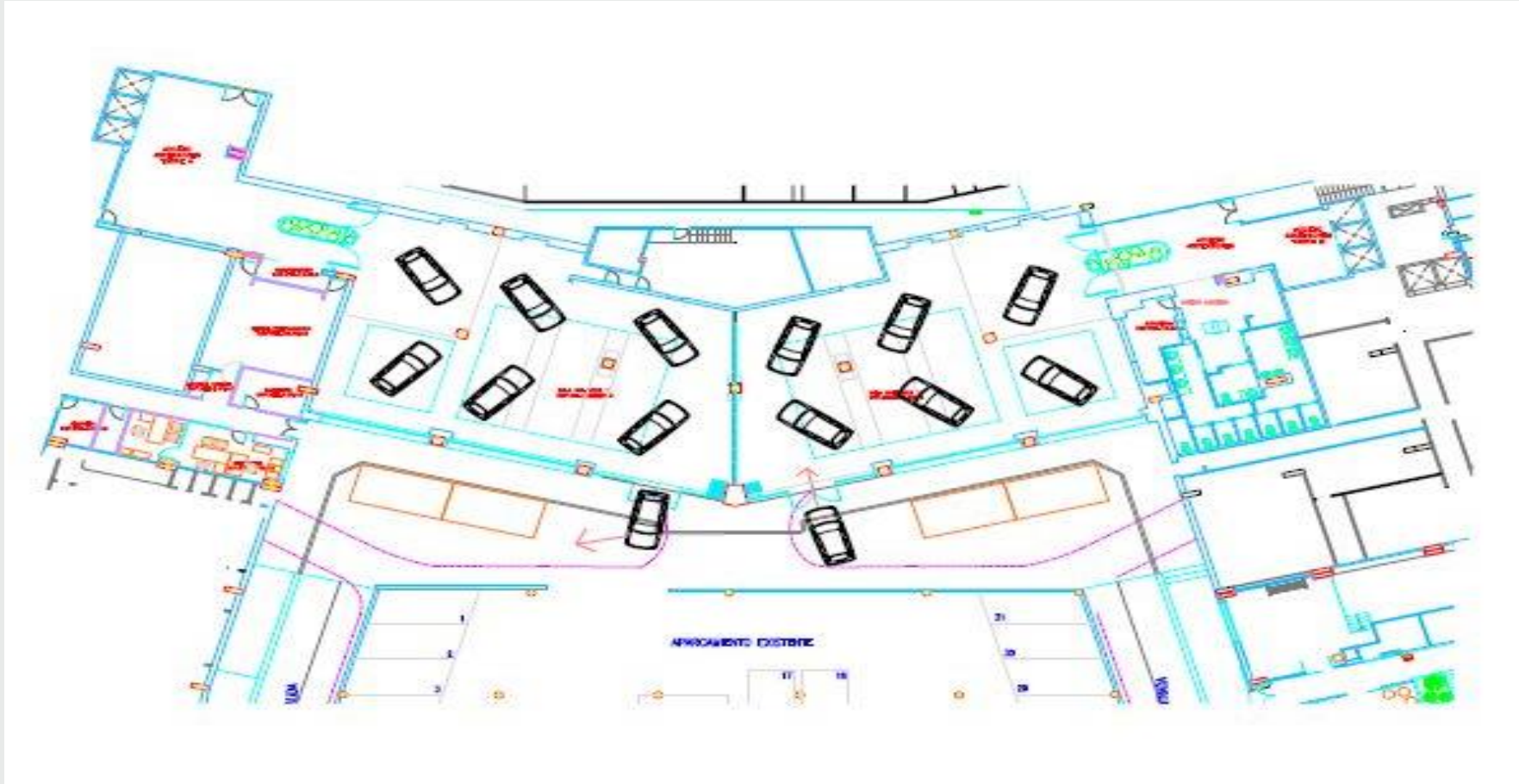
MEDITERRANEO MEETING ROOM

Surface	Height	Theatre	Classroom	“U”shape
246 m ²	3.19 m	300	145	50

This hall can be divided using a system of mobile, soundproof panels, creating up to 6 breakout rooms. It is ideal for meetings from 20 to 250 attendees, depending on the room setup and configuration.

MEDITERRANEO MEETING ROOM





ALBORAN MEETING ROOM

Surface	Height	Theatre	Cars	Car access
547 m ²	3.10 m	450	12 cars	2

ALBORAN MEETING ROOM









LEVANTE & PONIENTE MEETING ROOMS

Located on the hotel's main floor, each room offers 60 m² and natural daylight.

They can also be combined into a single 120 m² room.



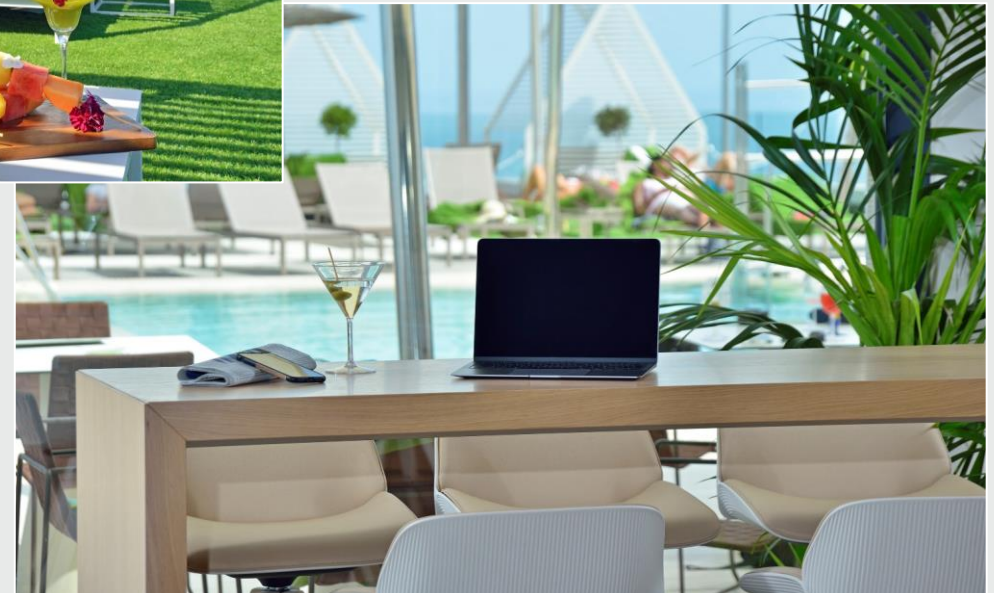
SALAS Y CAPACIDADES MEETING ROOMS, MEASUREMENTS & CAPACITIES											
SALAS MEETING ROOMS	M² Sq mt	F² Sq feet	Altura Height	Planta Floor	Divisible Divisible	CÓCTEL COCKTAIL	TEATRO THEATRE	ESCUELA SCHOOL	BANQUETE BANQUET	CABARET CABARET	EN "U" U-SHAPE
MEDITERRÁNEO	245.87	2.646	3,19	1	6	220	309	146	144	75	51
SALA A	41.90	451	3,19	1	-	-	40	18	-	10	15
SALA B	31.79	342	3,19	1	-	-	30	18	-	5	9
SALA C	24.73	266	3,19	1	-	-	18	6	-	5	9
SALA D	26.81	288	3,19	1	-	-	20	6	-	5	9
SALA E	38.55	415	3,19	1	-	-	38	18	-	5	15
SALA F	43.70	470	3,19	1	-	-	40	18	-	10	15
TORREMOLINOS	239.81	2.580	3,94	0	5	240	294	155	-	85	45
SALA A	38.86	418	3,94	0	-	-	42	12	-	10	12
SALA B	31.79	342	3,94	0	-	-	34	12	-	5	9
SALA C	65.49	705	3,94	0	-	-	74	24	-	15	18
SALA D	38.55	415	3,94	0	-	-	42	12	-	10	12
SALA E	59.65	427	3,94	0	-	-	40	18	-	10	15
MÁLAGA	360.31	3.877	4,24	-1	-	300	400	220	204	145	63
ALBORÁN	547.00	5.446	3,10	-1	2	400	480	252	340	216	-
SALA 1	273.50	2.723	3,10	-1	-	200	240	126	144	108	-
SALA 2	273.50	2.723	3,10	-1	-	200	240	126	144	108	-
PONIENTE	60.22	648	2,70	0	-	30	35	30	-	15	24
LEVANTE	60.22	648	2,70	0	-	30	35	30	-	15	24

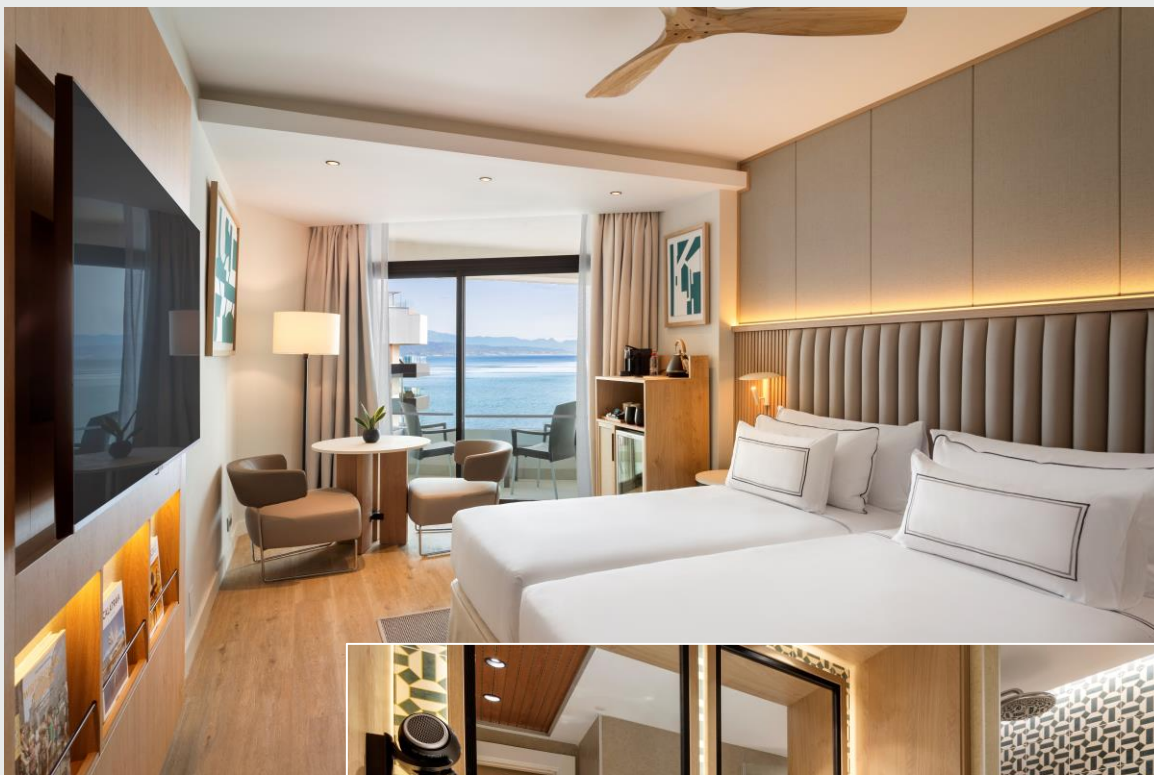


4 THE LEVEL

The Level is to add VALUE

- Private reception.
- Private breakfast.
- Exclusive access to lunch with an open bar offering snacks and beverages.
- Exclusive solarium and swimming pool at The Level Lounge.
- 30% discount on the Thalasso Spa circuit.
- *Adults only (from 16 years old).*





The Level Sea View

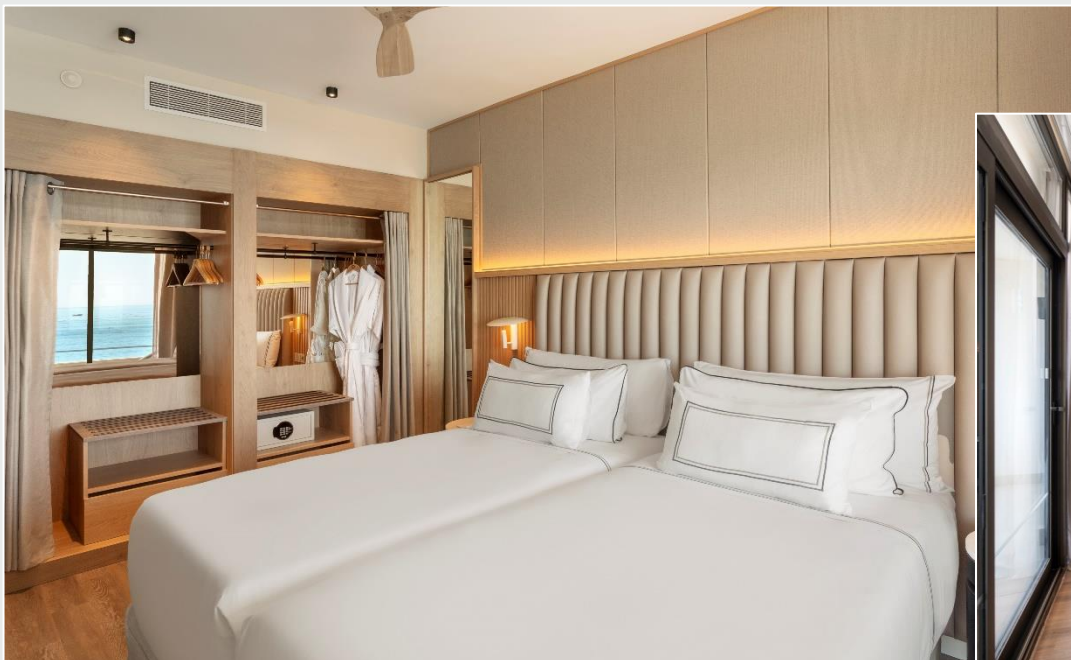
- Rooms of 28–30 m² with sea views.
- King-size bed or two individual TWIN beds.
- Welcome amenities.
- Exclusive bathroom amenities set.
- Premium Wi-Fi.
- Capsule coffee station.
- 55” LED TV in the bedroom with Chromecast technology.
- Located between the 5th and 9th floors of the hotel.
- **Exclusive access to the Rooftop The Level Lounge.**



The Level Junior Suites

- 70 m² with front sea view.
- TWIN or King beds plus a sofa bed.
- Premium Wi-Fi and safe.
- Kettle with tea station and coffee machine included.
- Premium amenities.
- Welcome gift.
- 65" LED TV in the living room and 43" LED TV in the bedroom, both with Chromecast technology.
- Located from the 5th to the 9th floor.
- **Exclusive access to the Rooftop The Level Lounge.**





The Level Master Suites

- Rooms of 58 m² plus a 20 m² terrace.
- Featuring 2 bedrooms, 2 bathrooms, and a separate living room.
- Stunning front sea views.
- King-size bed or two single beds in each bedroom, plus a sofa bed in the living room.
- Kettle with tea service and capsule coffee machine.
- 65" LED TV in the living room and 43" LED TV in the bedroom, both with Chromecast technology.
- **Exclusive access to the Rooftop The Level Lounge.**





MELIÁ

COSTA DEL SOL

MÁLAGA

Discover more about us on [melia.com](https://www.melia.com)
Meliá Hotels International,
the most sustainable hotel company in the world in 2022 by S&P Global